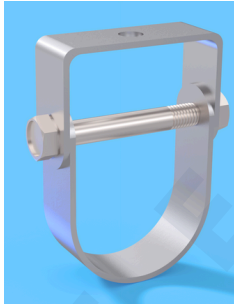


PRODUCT'S DATA SHEET



Consists of a yoke and a support strap made from shaped carbon steel strip and a joining bolt. 15° swing in either direction allows pipe to easily feed through. Pipe will not pinch when installing. Engineered design aligns bolt holes for quicker overhead installation.



FLAT TOP CLEVIS HANGER

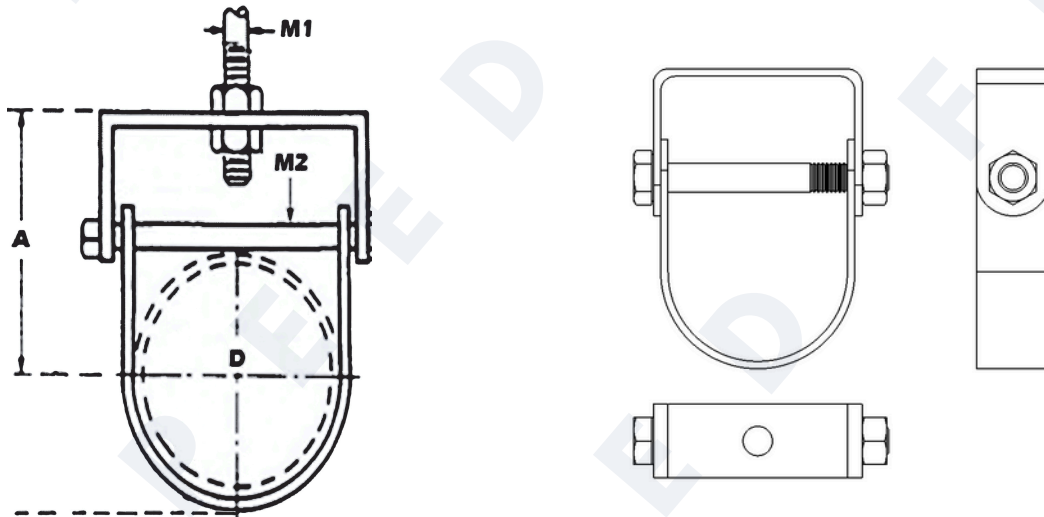
Designed for suspension of insulated or non-insulated stationary pipes

Material

Galvanized Carbon Steel

FINISH

Plain, Electro-Galvanized, Hot Dip Galvanized or epoxy coating



product code	pipe size	pipe Diameter	D (mm)	d (mm)	A (mm)	Max load (KN)
	inch	(mm)				
SF-FCH 3/4	3/4"	31	11	9	51	6.5
SF-FCH 01	1"	34	11	9	64	6.4
SF-FCH 01.25	1.25"	43	11	9	69	9
SF-FCH 01.5	1.5"	49	11	9	76	9
SF-FCH 02	2"	61	11	9	88	12
SF-FCH 02.5	2.5"	74	13	9	99	13
SF-FCH 03	3"	90	13	11	120	15
SF-FCH 04	4"	115	13	13	150	24
SF-FCH 06	6"	169	17	13	187	21
SF-FCH 08	8"	229	21	13	225	34
SF-FCH 10	10"	280	21	16	265	60
SF-FCH 12	12"	324	21	16	405	68