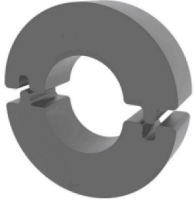


PRODUCT'S DATA SHEET



RUBBER SUPPORT INSERT



FEATURES & BENEFITS

- used at the supporting points of insulated pipes to prevent crushing of insulation
- inherently superior to wood
- very high load bearing capacity
- dimensionally accurate as each piece is moulded
- tongue and groove design
- available with steel reinforcements for higher sizes

MATERIAL

EPDM rubber

MAXIMUM TEMPERATURE

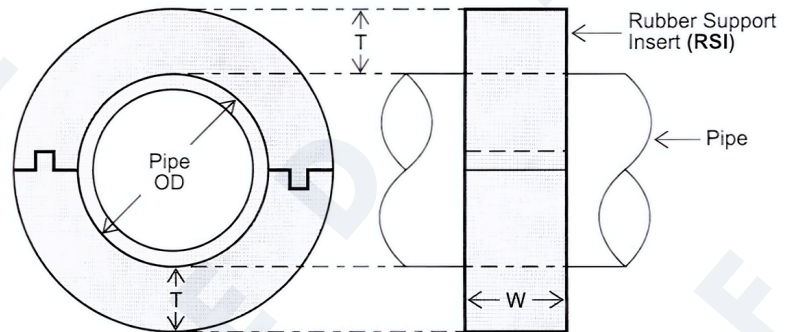
110°C

MINIMUM TEMPERATURE

-20°C

THERMAL CONDUCTIVITY

0.16W/m°C



T - RSI / Insulation Thickness, W - Width of RSI

product code	pipe size	RSI width W
	inch	mm
SF-RSI 0.5	.5	25
SF-RSI 0.75	.75	25
SF-RSI 1	1	25
SF-RSI 1.25	1.25	25
SF-RSI 1.5	1.5	25
SF-RSI 2	2	25
SF-RSI 2.5	2.5	38
SF-RSI 3	3	38
SF-RSI 3.5	3.5	38
SF-RSI 4	4	38
SF-RSI 5	5	50
SF-RSI 6	6	50
SF-RSI 8	8	50
SF-RSI 10	10	50
SF-RSI 12	12	50

RSI thickness T

Rubber Support Inserts (RSI) are available in the following standard insulation thicknesses: **(T). 13mm, 19mm, 25mm, 32mm, 38mm, 50mm, 65mm & 75mm.**